

Viper Constant Gallonage (CG) Series Nozzles

Constant Gallonage Fog through Straight stream

Flush without shutting down

Swivel NST or NPSH except on 2 1/2" models

Weights: 3.5lbs(1550), 2.9lbs(2510/5016), 6.4lbs(8020), 7.2lbs(8020-2 1/2")

Lengths: 9.25"(1550), 9.84"(2510/5016), 11.2"(8020), 13"(8020-2 1/2")

Made of extruded E-Lite alloy & Hard anodized

All Viper models are individually tested

(Low Pressure also available on most models)



STYLE	NOZZLE PRESSURE (psi)	NOZZLE FLOW (gpm)	STREAM SETTING	EFFECTIVE REACH
CG1550	75	26	SS	72
	100	30	SS	85
	150	37	SS	98
CG2510	75	82	SS	125
	100	95	SS	135
	150	116	SS	144
CG5016	75	108	SS	131
	100	125	SS	144
	150	153	SS	154
CG8020	75	182	SS	144
	100	210	SS	157
	150	257	SS	164

CG-5016-LP	75	125	SS	135
	100	144	SS	148
CG8020-LP	75	210	SS	151
	100	242	SS	157

 **C & S Supply, Inc.**

6342 East County Road 18, Johnstown, Colorado 80534

Ph: 970-663-4966 • Toll Free: 888-663-4966 • Fax: 970-663-3878 • www.CSSupplyInc.com

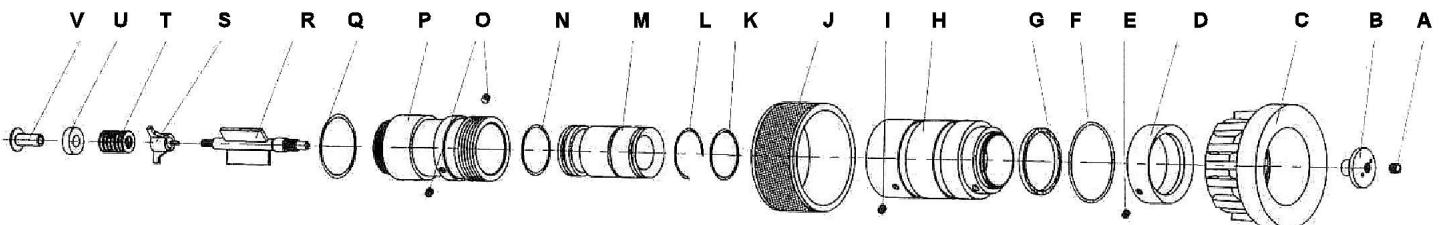
VIPER CG2510/5016



CG2510 AND CG5016 BOM			
REFERENCE	PART NAME	PART #	QUANTITY
A	SPINDLE SET PIN	V-SETPIN-3012	1
B	SPINDLE HEAD	V-SPNDLHD-3012	1
C	BUMPER	V- BUMPER-3012	1
D	RETAINER RING	V-RTNRRNG-3012	1
E	RET. RING SET PIN	V-SETPIN-RR-3012	2
F	RET. RING O-RING	V-ORING-RR-3012	1
G	SPINNING TEETH	V-TEETH-3012	1
H	OUTER BARREL	V-OUTRBRRL-2510	1
I	OUTER BARREL SET PIN	V-SETPIN-3012	1
J	BUMPER 2	V-BUMPER-2510	1
K	INNER BARREL O-RING 1	V-ORING-IB-2510	1
L	TRUARC	V-TRUARC-2510	1
M	INNER BARREL	V-INNERBARREL-2510	1
N	INNER BARREL O-RING 1	V-ORING-IB-2510	1
O	NOZZLE BARREL SET PIN	V-SETPIN-NZB-2510	2
P	NOZZLE BARREL	V-NZLBARREL-2510	1
Q	NOZZLE BARREL O-RING	V-ORING-3012	1
R	SPINDLE SHAFT	V-SPNDLSHFT-2510	1
S	SPINDLE SHAFT GUIDE		
V	SPINDLE SHAFT BASE		
*U	SPRING CYLINDER	V-SPRINGCYL-2510	
*T	SPRING	V-SPRING-FT2510	1

*= PART OF FT2510 AND FT5016 ONLY

CG2510 AND CG5016 TIP



C & S Supply, Inc.

6342 East County Road 18, Johnstown, Colorado 80534
 Ph: 970-663-4966 • Toll Free: 888-663-4966 • Fax: 970-663-3878 • www.CSSupplyInc.com

(VALVE PORTION) VB1560 and VB3012 BOM			
REFERENCE	PART NAME	PART #	QUANTITY
1	1" GASKET	GASKET_1	1
1a	1.5" GASKET	GASKET_15	1
2	1" SWIVEL	V-1" SWIVEL	1
2a	1.5" SWIVEL	V-1.5" SWIVEL	1
3	SWIVEL O-RING	V-ORING-SW-3012	1
4	BALL	V-BALL-3012	1
5	PISTOL GRIP	V-PG15V	1
6	BALL LOCATOR (2 PIECES)	V-BALLLOC-3012	1
7			
8	PISTOL GRIP SET PIN	V-SETPIN-3012	1
9	VALVE BODY	VLVBDY-3012	1
10	SEAT RETAINER (3 PIECES)	V-SEATRTNR-3012	1
11			
12			
13	BALL ACUATOR (2 PEICES)	V-BALLACT-3012	1
14	PAN HEAD COVER	V-PANHEAD-3012	1
15	SWIVEL SET PIN	V-SETPIN-3012	1
16	BALL BEARINGS	V-BEARINGS-3012	32
17	HANDLE (BAIL)	V-HANDLE-3012	1

SHUTOFF USE:

- Open and close the valve slowly to reduce risk of water hammer.
- Pull the bail handle toward the swivel to OPEN the valve.
- Push the bail handle toward the tip of the nozzle to CLOSE the valve.


TIP USE:

- the Gallonage is a constant flow in gallons per minute at 100 psi.
- flush setting is made to discharge obstructions from the nozzle without shutting down flow. If object doesn't flush automatically twist the nozzle to fog position.
- Rotate the rubber bumper on the end to select spray pattern.

CG1550 AVAILABLE KITS		
KIT#	KIT Name	PARTS CONTAINED
VNRK-1550	VIPER NOZZLE REPAIR KIT FT/CG1550	A,B,C,D,E,G,H,I,K,L,M,O,P,R,S,T 1,3,4,5,6,7,8,10,11,12,13,14,15,16,17,18
VVRK-3012	Valve Repair Kit Small	1,1a,3,4,6,7,10,11,12,13,14,15,16,17,18
VBSC-3012	Ball & Seat Combo Small	4,10,11,12
V-HH5-3012	Handle Hardware Small	6,7,13,14,15
V-SWKIT1560	Swivel Kit 1" Small	1,3,16,17
V-SWKIT3012	Swivel Kit 1.5" Small	1a,3,16,17

Maintenance:

- Test nozzle before putting into service.
- Clean nozzle by flushing with water after use.
- Use non-detergent soap to clean dirt from the exterior to reduce wear .
- Regularly check the bail handle



DANGER

**PLEASE BE RESPONSIBLE!
PLEASE BE CAREFUL!**

THE USER OF THIS EQUIPMENT IS PERSONALLY RESPONSIBLE FOR THE FOLLOWING:

1. You need to know and understand that Fire-fighting and Emergency response is dangerous and proper training is needed.
2. You need to be physically fit and skillful in the use of any equipment that you may need to use.
3. You need to know that your equipment is in proper working order.
4. You need to know carelessness or negligence may result in injury or death.

**PLEASE BE RESPONSIBLE!
PLEASE BE CAREFUL!**

- screws that they are tight. If taken out use medium thread locker on the threads before reassembly.
- Periodically service your nozzle or have your fire equipment dealer service it.
- Normally serviced parts are the: Ball, Seat assembly, Spinning teeth, and the handle hardware (Ball locator screw, Actuator, Pan head cover).

