

Viper Automatic (FT) Series Nozzles

Automatic: Three settings 75PSI, 100 PSI, 150PSI

Flush without shutting down

Swivel: NST or NPSH except on 2 1/2" models

Wts: 3.5lbs(1550), 4.5lbs(2510/5016), 6.5lbs (8020), 7.3lbs(8020-2 1/2"/12250)

Lengths: 9.25"(1550), 9.84"(2510/5016), 11.2"(8020), 13"(8020-2 1/2"/12250)

Made of extruded E-Lite alloy & Hard anodized

All Viper models are individually tested

(Low Pressure also available on most models)



STYLE	NOZZLE PRES-SURE (psi)	NOZZLE FLOW (gpm)	STREAM SETTING	EFFECTIVE REACH
FT1550	75	15	SS	69
	100	23	SS	82
	150	50	SS	112
FT2510	75	25	SS	121
	100	38	SS	131
	150	100	SS	141
FT5016	75	50	SS	128
	100	70	SS	138
	150	160	SS	151
FT8020	75	80	SS	131
	100	145	SS	144
	150	200	SS	161

FT5016-LP	75	70	SS	131
	100	110	SS	141
FT8020-LP	75	200	SS	138
	100	265	SS	161

 **C & S Supply, Inc.**

6342 East County Road 18, Johnstown, Colorado 80534
 Ph: 970-663-4966 • Toll Free: 888-663-4966 • Fax: 970-663-3878 • www.CSSupplyInc.com

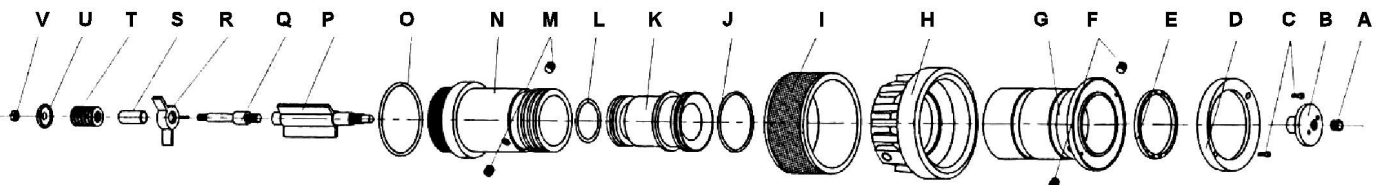
VIPER FT8020/12250



CG8020, FT8020, AND FT12250 BOM			
REFERENCE	PART NAME	PART #	QUANTITY
A	SPINDLE SET PIN	V-SETPIN-9520	1
B	SPINDLE HEAD	V-SPNDLHD-9520	1
C	RET. RING SET PIN	V-SETPIN-RR-9520	2
D	RETAINER RING	V-RTNRRNG-9520	1
E	SPINNING TEETH	V-TEETH-9520	1
F	OUTER BARREL SET PIN	V-SETPIN-OB-8020	2
G	OUTER BARREL	V-OUTBRRL-8020	1
H	BUMPER	V-BUMPER-9520	1
I	BUMPER 2	V-BUMPER-8020	1
J	INNER BARREL O-RING 1	V-ORING-IBL-8020	1
K	INNER BARREL	V-INNERBARREL-8020	1
L	INNER BARREL O-RING 2	V-ORING-IBS-8020	1
M	NOZZLE BARREL SET PIN	V-SETPIN-NZB-8020	1
N	NOZZLE BARREL	V-NZLBARREL-8020	1
O	NOZZLE BARREL O-RING	V-ORING-9520	1
P	SPINDLE SHAFT 1	V-SPNDLSHFT-8020	1
Q	SPINDLE SHAFT 2		
R	SPINDLE SHAFT GUIDE		
S	SPRING CYLINDER		
U	SPINDLE SHAFT BASE		
V	JAM NUT		
*T	SPRING	V-SPRING-FT8020	1

*= PART OF FT8020 AND FT12250 ONLY

FT8020 AND FT12250 TIP



C & S Supply, Inc.

6342 East County Road 18, Johnstown, Colorado 80534
 Ph: 970-663-4966 • Toll Free: 888-663-4966 • Fax: 970-663-3878 • www.CSSupplyInc.com

(VALVE PORTION) VB9520 and VB9520-2.5 BOM			
REFERENCE	PART NAME	PART #	QUANTITY
1	1.5" GASKET	GASKET_15	1
1a	2.5" GASKET	GASKET_25	1
2	1.5" SWIVEL (LARGE)	V-1.5" SWIVEL-9520	1
2a	2.5" SWIVEL	V-2.5" SWIVEL-9520	1
3	SWIVEL O-RING	V-ORING-SW-9520	1
4	BALL	V-BALL-9520	1
5	PISTOL GRIP	V-PG15V	1
6	BALL LOCATOR (2 PIECES)	V-BALLOC-9520	1
7			
8	PISTOL GRIP SET PIN	V-SETPIN-PG	1
9	VALVE BODY	VLVBDY-9520	1
10	SEAT RETAINER (3 PIECES)	V-SEATRTNR-9520	1
11			
12			
13	BALL ACUATOR (2 PEICES)	V-BALLACT-9520	1
14			
15	PAN HEAD COVER	V-PANHEAD-9520	1
16	SWIVEL SET PIN	V-SETPIN-9520	1
17	BALL BEARINGS	V-BEARINGS-9520	32
18	HANDLE (BAIL)	V-HANDLE-9520	1

SHUTOFF USE:

- Open and close the valve slowly to reduce risk of water hammer.
- Pull the bail handle toward the swivel to OPEN the valve.
- Push the bail handle toward the tip of the nozzle to CLOSE the valve.

TIP USE:

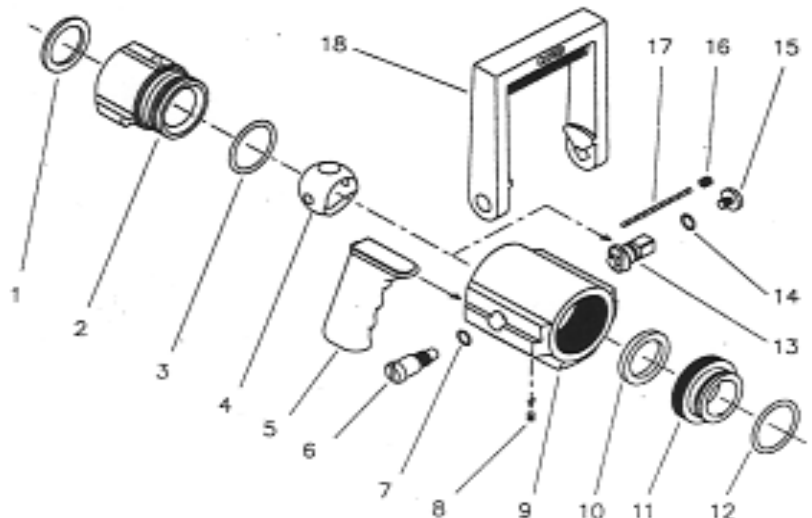
- The flow is in gallons per minute at 75psi, 100 psi, and 150psi
- Flush setting is made to discharge obstructions from the nozzle without shutting down flow. If object doesn't flush automatically twist the nozzle to fog position.
- Rotate the rubber bumper on the end to select spray pattern.

AVAILABLE KITS		
KIT#	KIT Name	PARTS CONTAINED
VNRK-8020	VIPER NOZZLE REPAIR KIT CG/FT8020 OR FT12250	A,B,C,D,E,F,H,I,J,L,M,O,P,Q,R,S,U,V 1,1a,3,4,6,7,10,11,12,13,14,15,16,17,18
VVRK-9520	Valve Repair Kit Lg.	1,1a,3,4,6,7,10,11,12,13,14,15,16,17,18
VVBSC-9520	Ball & Seat Combo Lg.	4,10,11,12
V-HH5-9520	Handle Hardware Lg.	6,7,13,14,15
V-SWKIT9520	Swivel Kit 1.5" Lg.	1,3,16,17
V-SWKIT9520-2.5	Swivel Kit 2.5" Lg.	1a,3,16,17

Maintenance:

- Test nozzle before putting into service.
- Clean nozzle by flushing with water after use.
- Use non-detergent soap to clean dirt from the exterior to reduce wear .
- Regularly check the bail handle screws that they are tight. If taken

- out use medium thread locker on the threads before reassembly.
- Periodically service your nozzle or have your fire equipment dealer service it.
- Normally serviced parts are the: Ball, Seat assembly, Spinning teeth, and the handle hardware (Ball locator screw, Actuator, Pan head cover).



**PLEASE BE RESPONSIBLE!
PLEASE BE CAREFUL!**

THE USER OF THIS EQUIPMENT IS PERSONALLY RESPONSIBLE FOR THE FOLLOWING:

1. You need to know and understand that Fire-fighting and Emergency response is dangerous and proper training is needed.
2. You need to be physically fit and skillful in the use of any equipment that you may need to use.
3. You need to know that your equipment is in proper working order.
4. You need to know carelessness or negligence may result in injury or death.

**PLEASE BE RESPONSIBLE!
PLEASE BE CAREFUL!**